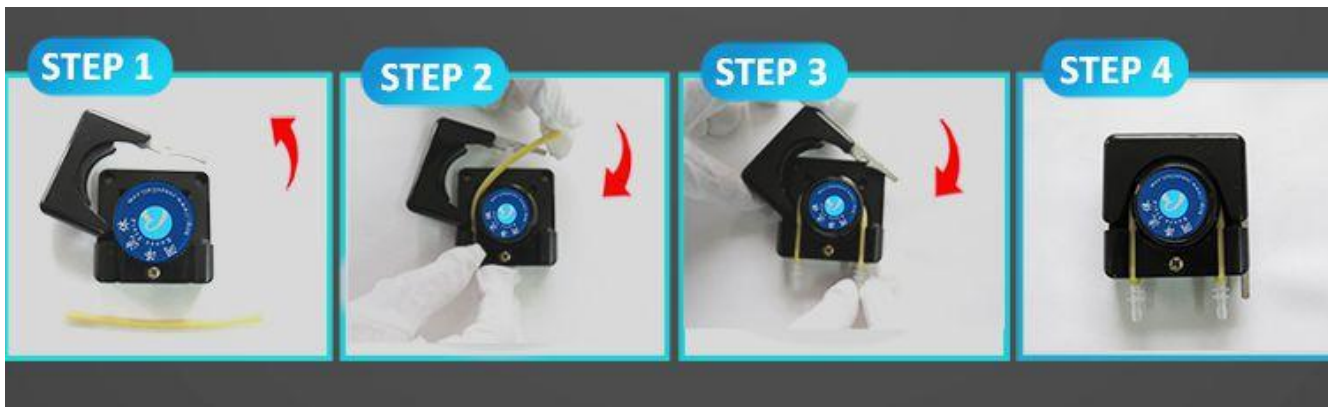




Technical Parameter

Model No.	ZL12-RZ1030-4-300R (12v) ZL24-RZ1030-4-300R (24v)
Roller numbers	4 rollers
Roller material	POM
Pump head material	ABS
Motor type	12V/24V DC motor
Rated current	0.2A
Rated power	5W
Speed	300rpm (other speed OEM support)
Flow rate	0-140ml/min
Tubing size	ID0.64-3.0mm WT0.8-1.0mm OD≤5mm
Working temperature	0-40°C
Working humidity	< 80% relative humidity, non-condensing
Working Max. DB	75db
Dimension (L*W*H)	83*57*57mm
Weight	255g

Tubing Steps



Flow Rate Table (only for reference) (media: water)

Tube type	Motor Speed (rpm)	Tube size (ID*WT: mm)	ZL12-RZ1030-4-300R (ml/min)	ZL24-RZ1030-4-300R (ml/min)
Rubber tube	300rpm	0.64*0.8	6	10
		0.76*0.8	9	13
		0.89*0.8	10	16
		1.02*0.8	13	22
		1.14*0.8	14	24
		1.30*0.8	22	32
		1.42*0.8	28	36
		1.52*0.8	31	41
		1.65*0.8	37	46
		1.85*0.8	46	54
		2.06*0.8	55	67
		2.29*0.8	58	96
		2.54*0.8	95	112
		2.79*0.8	105	125
Silicon tube	300rpm	1*1	15	23
		2*1	47	86
		3*1	122	140

Peristaltic Tube

- 1) Silicone tube works for non-corrosive liquid transfer
- 2) Rubber tube works for weak corrosive liquid transfer
- 3) Viton tube works for strong corrosive liquid transfer



Tubing Connection

Standard 10cm peristaltic tube + 2 pieces barbed fittings + external tube

Dimension (unit: mm)



ZL12-RZ1030-4.pdf

Packing Info.

Carton Size: 8.5*15*11CM

G.W.: 0.5KG



Nanjing Runze Fluid Control Equipment Co.,Ltd
No.9 Tianxing West Road Dongshan Street Jiangning District
Nanjing City, Jiangsu Province, China
Mobile: +86 17366384502
Email: min.zhu@runzeliuti.com
Contact: Julie Zhu